

Crestron **C2ENET-1/-2**  
2-Series Ethernet Interface Expansion Card  

---

Operations & Installation Guide



**CRESTRON**

This document was prepared and written by the Technical Documentation department at:



Crestron Electronics, Inc.  
15 Volvo Drive  
Rockleigh, NJ 07647  
1-888-CRESTRON

# Contents

## **2-Series Ethernet Interface Expansion Cards: C2ENET-1 & C2ENET-2 .... 1**

Introduction .....	1
Features and Functions .....	1
Specifications .....	2
Physical Description .....	2
Industry Compliance .....	3
Ethernet Cable Connections.....	4
Setup .....	5
Installation .....	5
IP Setup .....	6
Verify Communication.....	8
Setting a Control System Ethernet Password .....	9
Network Address Translation for Crestron 2-Series Control Systems .....	10
Programming .....	11
Programming with the Crestron AppBuilder.....	11
Programming with SIMPL Windows .....	11
TCP/IP Client and TCP/IP Server Symbols .....	13
Programming with VT Pro-e .....	15
Uploading Web pages.....	15
Problem Solving .....	16
Troubleshooting.....	16
Further Inquiries .....	17
Firmware Upgrades .....	17
Future Updates .....	17
Software License Agreement.....	18
Return and Warranty Policies.....	20
Merchandise Returns / Repair Service .....	20
CRESTRON Limited Warranty.....	20

## **Glossary of Terms .....21**



# 2-Series Ethernet Interface Expansion Cards: C2ENET-1 & C2ENET-2

---

## Introduction

### Features and Functions

The 2-Series Ethernet Interface Expansion Cards, C2ENET-1 and C2ENET-2, are 10/100 BaseT half/full duplex Ethernet cards designed for use in the Z-bus slot of Crestron's AV2, PAC2, PRO2, and RACK2 2-Series control systems. The C2ENET-1 is a single-port WAN/LAN card, while the C2ENET-2 is a dual-port WAN/LAN card that, once installed, activates a control system's built-in firewall, router and network address translator (NAT). This allows for remote diagnostics and upgrades, access to Crestron's network analyzer, and the ability to activate any device connected to a local control system via the Internet/Intranet.

Throughout this guide, all references to C2ENET-1/-2 apply to both versions except where noted.

As part of Crestron e-Control™, the C2ENET-1/-2 allows Internet communications to a control system. Web pages created in VisionTools™ Pro-e (VT Pro-e) or other web page development tools can be uploaded and stored in the control system's file system. Refer to the 2-Series control system documentation for more information.

The C2ENET-1/-2 allows up to 30 IP connections to simultaneously communicate with a control system. A control system can be accessed through the World Wide Web using browsers such as Microsoft® Internet Explorer™ or Netscape® Navigator. For a Crestron e-Control demonstration, go to [www.crestron-econtrol.com](http://www.crestron-econtrol.com). Further information and additional Crestron e-Control software can be obtained from the Software Updates section (e-Control subsection) of Crestron's website ([www.crestron.com](http://www.crestron.com)).

#### *Functional Summary*

- 10/100 BaseT half/full duplex design
- High-speed Ethernet connectivity
- Dual LAN/WAN ports in C2ENET-2
- Supports all Internet Protocols

## Specifications

The following table provides specifications for the C2ENET-1/-2.

### *Specifications of the C2ENET-1/-2*

SPECIFICATION		DETAILS
Power Requirements:	C2ENET-1	2 Watts (0.083 amps @ 24 VDC)
	C2ENET-2	3 Watts (0.125 amps @ 24 VDC)
Network Type		10/100BaseT, half or full duplex
Protocols		Supports all Internet protocols including TCP/IP, UDP/IP, ICMP (Ping), & HTTP
2-Series Control System Update File <sup>1,2</sup>		Version C2-1001.CUZ or later
Netscape Navigator		Version 4.5 or later
Internet Explorer		Version 4.0 or later
IP Address Configuration		Static address
Dimensions		Height: 0.98 in (2.49 cm) Width: 4.28 in (10.86 cm) Depth: 4.71 in (11.95 cm)
Weight:	C2ENET-1	2.40 oz (0.07 kg)
	C2ENET-2	2.60 oz (0.08 kg)

- 1 The latest software versions can be obtained from the Downloads | Software Updates section of the Crestron website ([www.crestron.com](http://www.crestron.com)).
- 2 Crestron 2-Series control systems include the AV2, PAC2, PRO2 and RACK2.

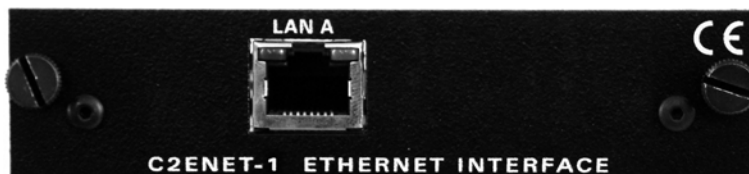
**NOTE:** Crestron software and any files on the website are for Authorized Crestron dealers only. New users may be required to register to obtain access to certain areas of the site (including the FTP site).

## Physical Description

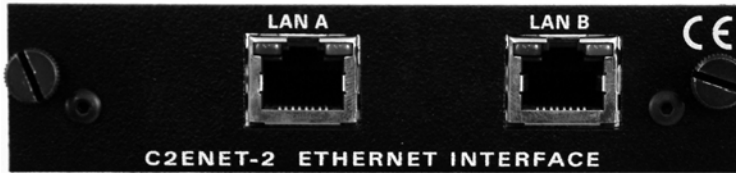
The C2ENET-1 and C2ENET-2 (refer to graphics below and on next page) are printed circuit boards (PCBs) fastened to aluminum faceplates. The cards are designed to be installed in a Z-BUS expansion slot on the 2-Series control systems. Two thumbscrews secure the cards.

The C2ENET-1 contains one 8-wire RJ45 Ethernet/LAN port. The C2ENET-2 contains two 8-wire RJ45 ports (LAN A and LAN B). The port(s) is used for connection using an Ethernet cable (refer to cable connection example on page 4) to the Ethernet.

### *C2ENET-1*



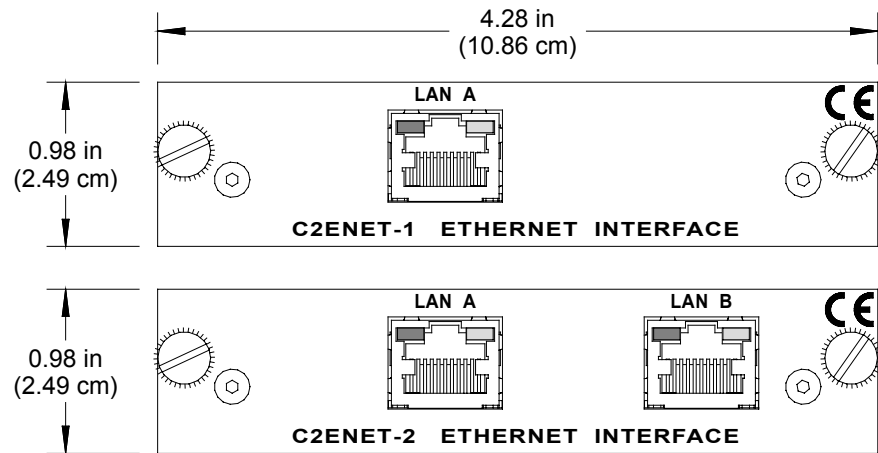
*C2ENET-2*



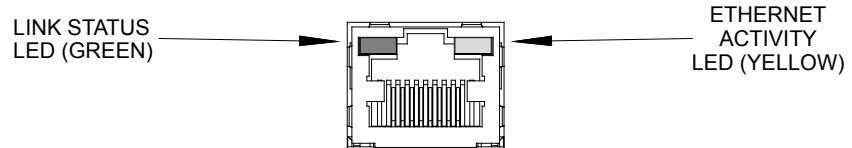
**NOTE:** When the C2ENET-2 is used as a router, the WAN must be connected to LAN A and the LAN must be connected to LAN B.

As shown in the illustration below, the port(s) contains two light-emitting diodes (LEDs). The green LED in the upper-left corner of the port(s) illuminates when it is connected to a working Ethernet. The yellow LED in the upper-right flashes to indicate Ethernet activity.

*C2ENET-1 & C2ENET-2 Faceplates*



*C2ENET-1/-2 Port Indicators*



**Industry Compliance**

As of the date of manufacture, the C2ENET-1/-2 has been tested and found to comply with specifications for CE marking and standards per EMC and Radiocommunications Compliance Labelling (N11785).

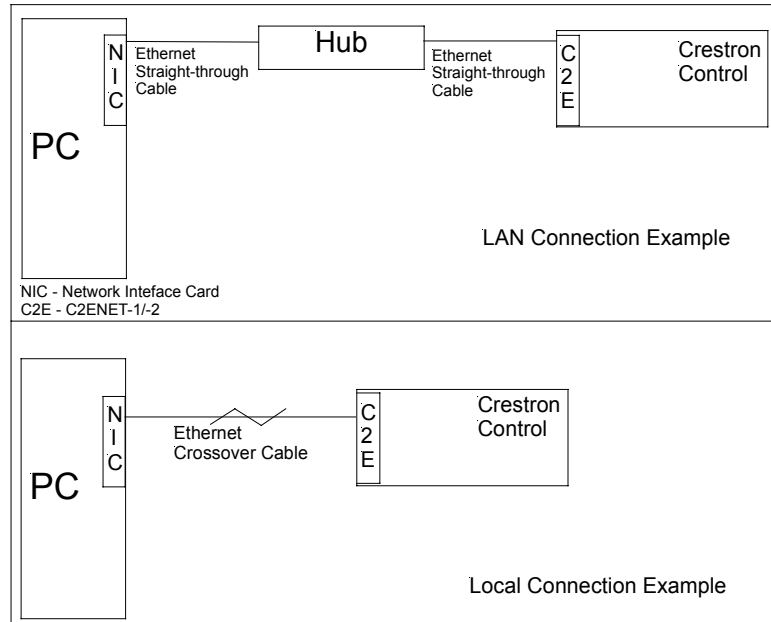


**NOTE:** This device complies with part 15 of the FCC rules. Operation is subject to the following two conditions: (1) this device may not cause harmful interference, and (2) this device must accept any interference received, including interference that may cause undesired operation.

# Ethernet Cable Connections

The following illustrates connection examples using a straight-through or crossover Ethernet cable.

### *Ethernet Cable Connection Example*



### **Connection to LAN**

If the control system is connected to a larger network via a hub, make sure that a straight (non-crossover type) Ethernet cable is used and that the cable is not connected to the UPLINK port of an Ethernet hub.

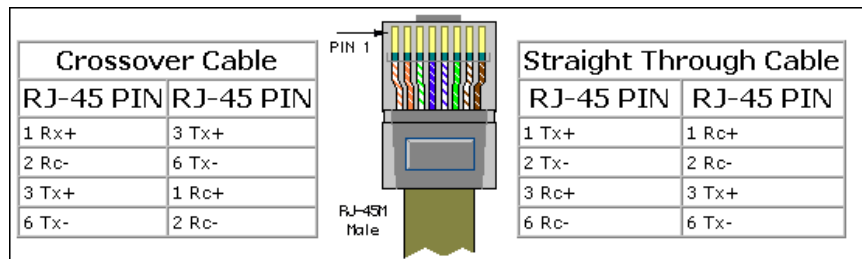
### **Connection to PC**

If the system is connected directly to a personal computer (PC) Ethernet card, make sure that the cable between the C2ENET-1/-2 is a crossover type.

### **RJ-45 Pinouts**

The following illustrates pinouts for a straight through and crossover RJ45 Ethernet cables. Pins 4, 5, 7 and 8 are not used.

#### *RJ-45 Pinouts*





# Setup

This section contains hardware installation and IP setup instructions for the C2ENET-1/-2.

### Required Tools/Hardware

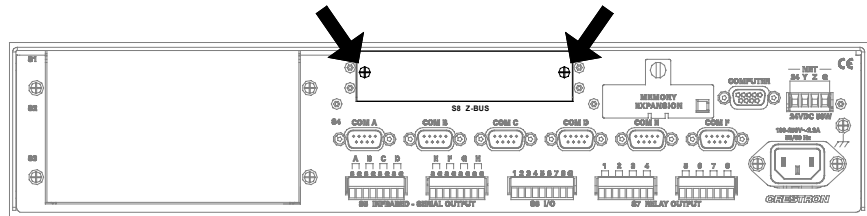
- #1 Phillips screwdriver
- Grounding strap (recommended)
- Straight-through RS 232 cable with a male DB9 connector and a female DB9 connector
- PC with Viewport installed and open
- Crestron Control System
- Ethernet cable (straight thru or crossover)

## Installation

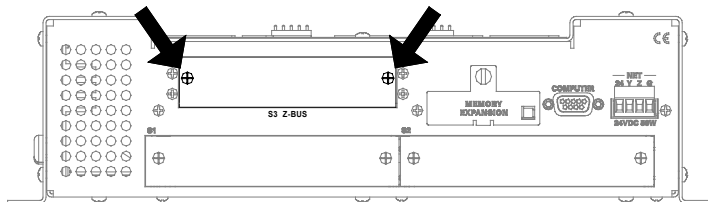
**CAUTION:** The C2ENET-1/-2 and the control system contain electro-static discharge (ESD) sensitive devices. Crestron recommends that you wear a grounding strap to avoid damaging the card and/or the control system.

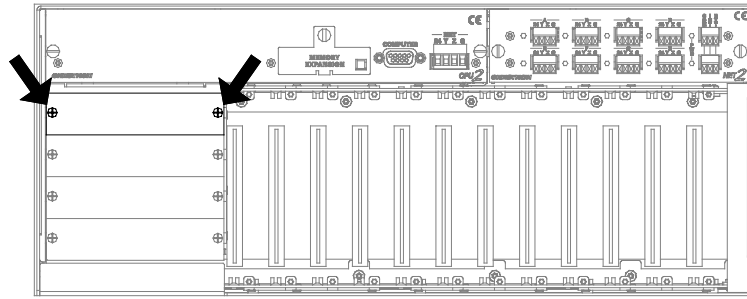
1. Disconnect power and Crestnet cables from the control system.
2. At the control system rear panel, remove the Z-BUS expansion slot blank faceplate. Refer to the following three examples.

*AV2 (AV2 with Card Cage & PRO2 Similar) Z-BUS Expansion Slot Example*



*PAC2 Z-BUS Expansion Slot Example*



*RACK2 Z-BUS Expansion Slot (Slot 1 shown) Example*

3. Remove Ethernet card from its packaging.
4. On the Ethernet card, make sure the thumbscrews are extended outward, align the card with the card guides in the open Z-BUS expansion slot and slide the card into slot.
5. Firmly press both ends of the card faceplate to seat it on the Z-BUS connector.

---

**CAUTION: DO NOT FORCE CARD IN SLOT.**

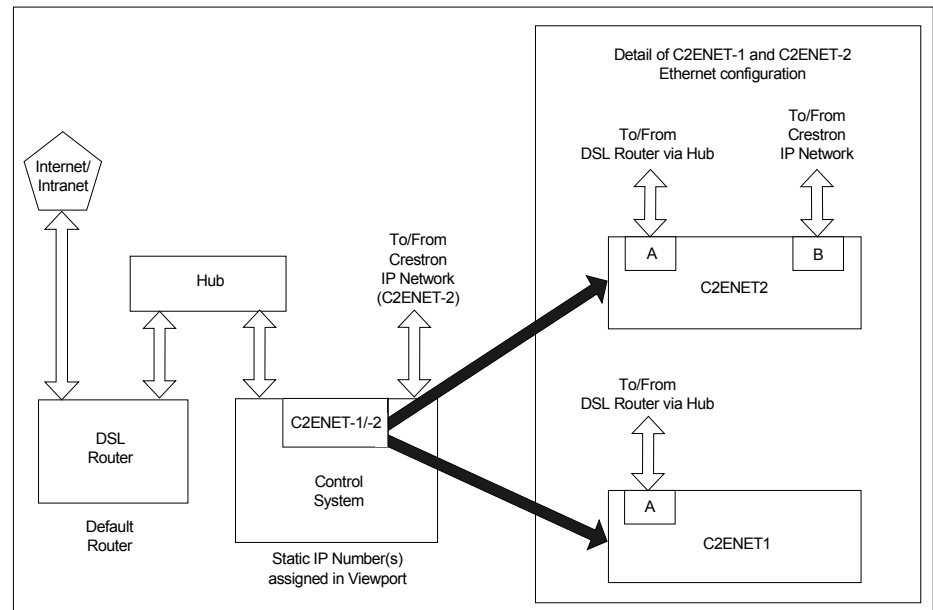
---

6. Tighten the thumbscrews to finger-tight to secure the card.
7. Reapply power and connect the Crestnet and Ethernet cables.

## IP Setup

This section provides step-by-step instructions to configure a control system to communicate over Ethernet using standard static IP configurations. The following illustration shows a simplified example of a possible IP setup. The control system and router are assigned IP numbers using Viewport. The external router is not configured using Viewport.

### *IP Setup*



The following instructions assume that the C2ENET-1/-2 is installed, Viewport is open on the PC and control system is powered up.

---

**NOTE:** If the PC has a DB25 male connector, obtain a DB9 to DB25 adapter (the adapter has a DB9 male end and a DB25 female end).

---

1. Connect the DB9 cable to the RS 232 COMPUTER port (male end) of the control system and the serial port (female end) of the PC.

---

**NOTE:** It is assumed that your PC is communicating with the control system and the appropriate update file has been loaded.

---

2. Obtain appropriate control system static IP and router addresses from the/your network administrator.

---

**NOTE:** The next 3 steps have you verify that the static IP address is not being used by another device.

---

3. On the PC, select **Start | Run** from the Taskbar to open the “Run” window.
4. Type **command** in the *Open* field and click **OK**. A DOS window appears.
5. At the prompt, type PING and the IP number. Press Enter.

Example: PING 192.168.1.102

---

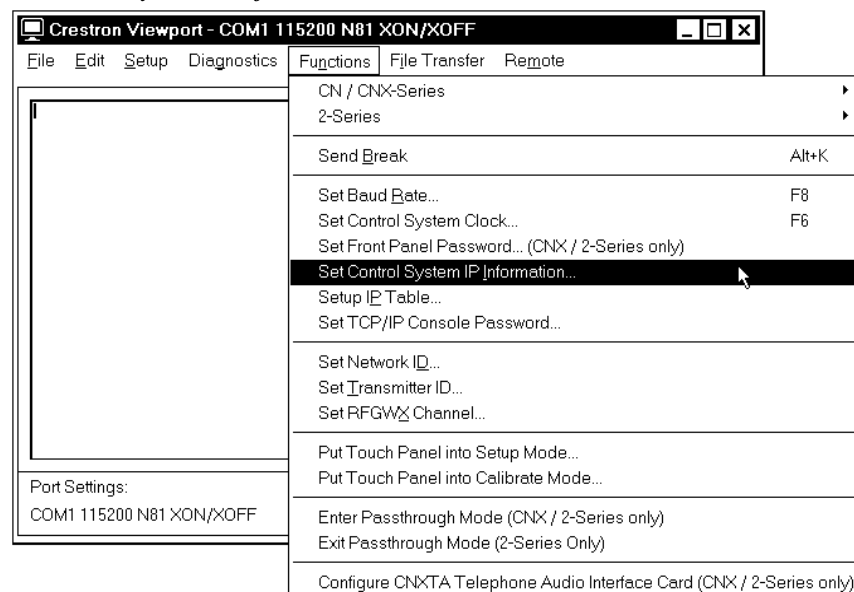
**NOTE:** Make sure you put a space between PING and the IP number.

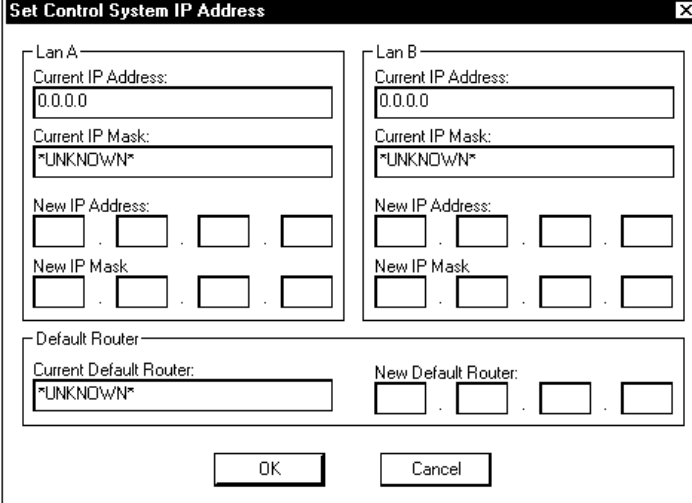
**NOTE:** If the system shows a “Request timed out”, go to step 6. If the system shows a “Reply from” with a time, the IP number is already in use. Obtain another IP number and repeat step 5.

---

6. Open the Crestron Viewport and select **Functions | Set Control System IP Information** from the main menu. The “Set Control System IP Address” window opens (refer to graphic on next page).

#### Set Control System IP Information



*Set IP Address window*


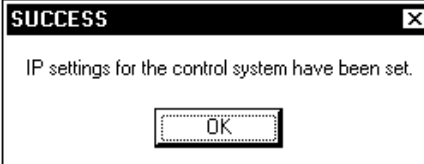
The dialog box is titled "Set Control System IP Address" and contains the following fields:

- Lan A:**
  - Current IP Address: 0.0.0.0
  - Current IP Mask: \*UNKNOWN\*
  - New IP Address: Four empty boxes for IP address entry.
  - New IP Mask: Four empty boxes for IP mask entry.
- Lan B:** (Fields are grayed out)
  - Current IP Address: 0.0.0.0
  - Current IP Mask: \*UNKNOWN\*
  - New IP Address: Four empty boxes for IP address entry.
  - New IP Mask: Four empty boxes for IP mask entry.
- Default Router:**
  - Current Default Router: \*UNKNOWN\*
  - New Default Router: Four empty boxes for router address entry.

Buttons: OK, Cancel

**NOTE:** Entries for *LAN B* are grayed out unless the C2ENET-2 is detected in the control system.

- Enter the IP numbers (for C2ENET-2, place external networks on LAN A and internal networks on LAN B) in the *New IP Address* fields and the router number(s) in the *New Default Router* fields. The subnet mask number (New IP Mask field) is set automatically.
- Click **OK** to accept the values. The “*Success*” window appears.

*Success Window*


The dialog box is titled "SUCCESS" and contains the following text:

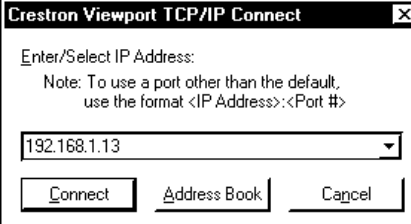
IP settings for the control system have been set.

Button: OK

- Click **OK**. The control system reboots.
- Disconnect the RS-232 cable from your PC and the control system.

**Verify Communication**

- To verify that the C2ENET card communication, open Viewport on your PC and select **Remote | TCP/IP | Connect** from the Taskbar. The “Crestron Viewport TCP/IP Connect” window appears.

*Crestron Viewport TCP/IP Connect*


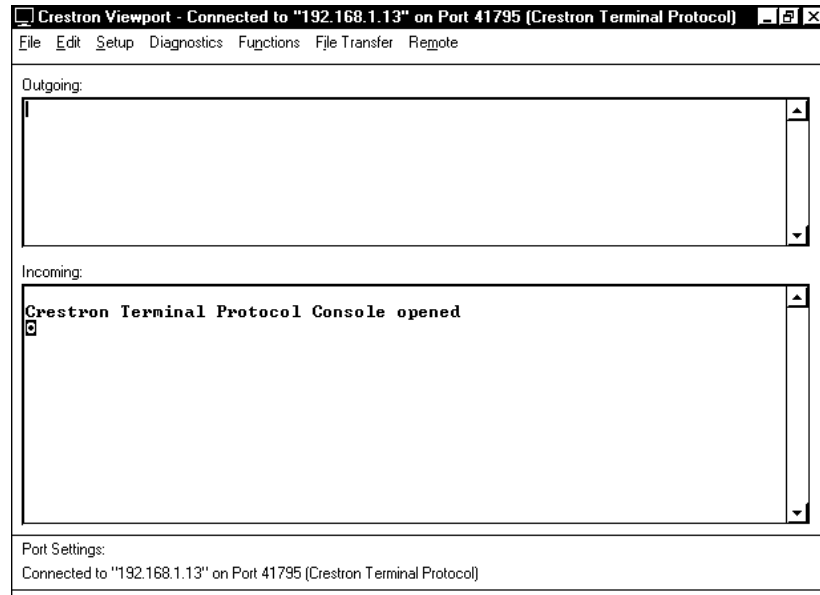
The dialog box is titled "Crestron Viewport TCP/IP Connect" and contains the following fields:

- Enter/Select IP Address: 192.168.1.13
- Note: To use a port other than the default, use the format <IP Address>:<Port #>

Buttons: Connect, Address Book, Cancel

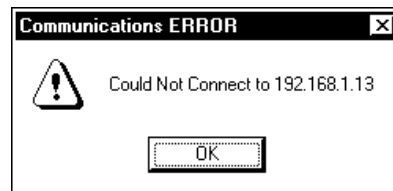
2. Enter the IP number you entered in step 7 above and click **Connect**. The Crestron Viewport confirms the connection.

#### Crestron Viewport TCP/IP Confirmation



**NOTE:** If the following Error window opens, verify IP address and repeat steps 1 and 2.

#### Error Window



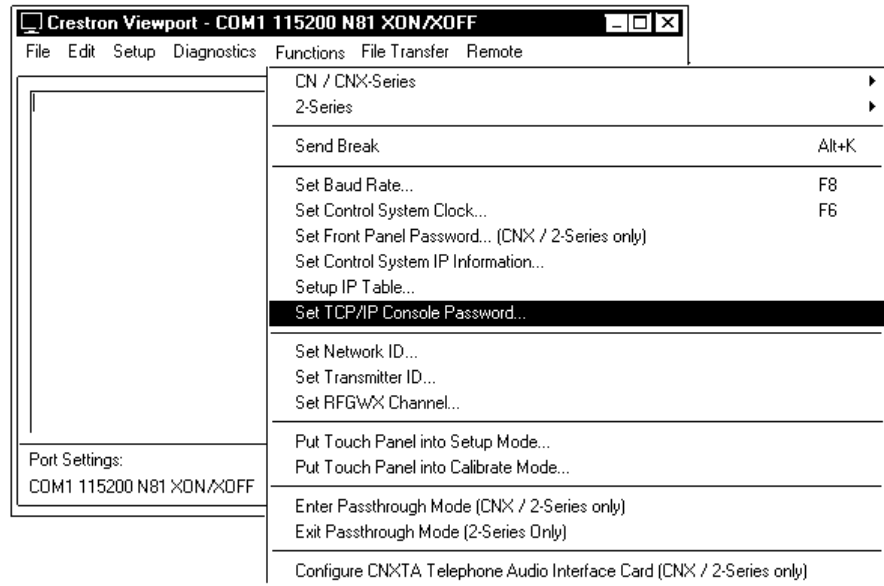
## Setting a Control System Ethernet Password

After establishing communication with a control system via Ethernet, the Viewport may be used to set (or change) a password to limit access to the control system.

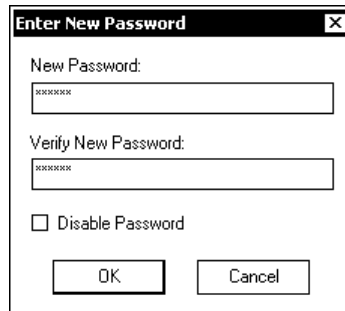
**NOTE:** The Ethernet password protects console communications (file transfer, diagnostics, etc.), it does not prevent users from browsing web pages.

Do the following to set a password:

1. In Viewport, select **Functions | Set TCP/IP Console Password**. The "Enter Password" window opens (refer to graphic on next page).

*Viewport Set TCP/IP Control Password option*

2. Enter and verify a new password and click **OK**.

*Enter New Password window*

## Network Address Translation for Crestron 2-Series Control Systems

Network Address Translation (NAT) is a method of connecting multiple computers on an internal network to the Internet (or any other IP network) using one publicly visible IP address. Current implementation for the Crestron 2-Series control systems includes a combination of the Network Address Port Translator protocol (NAPT) and Bi-Directional NAT. NAT functionality is included in the firmware of Crestron 2-Series control processors, and enabled through a dual port Ethernet Z-bus expansion card (C2ENET-2 only).

For specific details on NAT, including setup and configuration, refer to the Network Address Translator (NAT) document (latest version of Doc. 6001). It is available from the Downloads | Product Manuals section of the Crestron website ([www.crestron.com](http://www.crestron.com)).

---

## Programming

You can create a program that allows you to control a network device through a Crestron control system via a C2ENET-1/-2 card using the Crestron programming tools Crestron Application Builder™ (AppBuilder) or SIMPL Windows. These tools are intended for users with different levels of programming knowledge. The flexibility of each tool is proportional to the degree of programming expertise (i.e., the more flexible, the more a programmer needs to know and account for). Of course, one can initiate programming using the easiest method (Crestron AppBuilder) and use advanced techniques that are available from SIMPL Windows to customize the job.

The following are minimum software version requirements for the PC:

- SIMPL Windows version 2.01.06, or later. Requires SIMPL+ Cross Compiler version 1.1.
- VT Pro-e version 2.4 or later.
- Crestron Database version 15.7.3 or later.
- Application Builder version 1.1.1 or later. Requires SIMPL Windows.

### Programming with the Crestron AppBuilder

*The easiest method of programming, but does not offer as much flexibility as SIMPL Windows*

The Crestron AppBuilder offers automatic programming for such residential and commercial applications as audio distribution, home theater, video conferencing, and lighting. The interface of this tool guides you through a few basic steps for designating rooms and specifying the control system, touchpanels, devices, and functionality. The Crestron AppBuilder then creates the system program, including all touchpanel projects and control system logic.

The Crestron AppBuilder is fully integrated with Crestron's suite of software development tools, including SIMPL Windows, VT Pro-e, Crestron Database, User IR Database, and User Modules Directory. The Crestron AppBuilder accesses these tools behind the scenes, enabling you to easily create robust systems.

---

**NOTE:** Currently, AppBuilder automatically assigns (using SIMPL Windows) an Ethernet card (C2ENET-1) when an Ethernet device is added to a project.

---

### Programming with SIMPL Windows

---

**NOTE:** The following assumes that the reader has knowledge of SIMPL Windows. If not, refer to the extensive help information provided with the software.

**NOTE:** In the following description, the PRO2 control system and the C2ENET-2 are used.

---

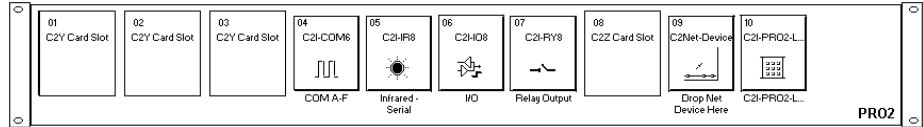
SIMPL Windows is Crestron's software for programming Crestron control systems. It provides a well-designed graphical environment with a number of workspaces (i.e., windows) in which a programmer can select, configure, program, test, and monitor a Crestron control system. SIMPL Windows offers drag and drop functionality in a familiar Windows® environment.

This section explains how to create a SIMPL Windows program that includes a C2ENET-1/-2.

Configuration Manager is where programmers “build” a Crestron control system by selecting hardware from the *Device Library*. In Configuration Manager, drag the PRO2 from the Control Systems folder of the *Device Library* and drop it in the upper pane of the *System Views*.

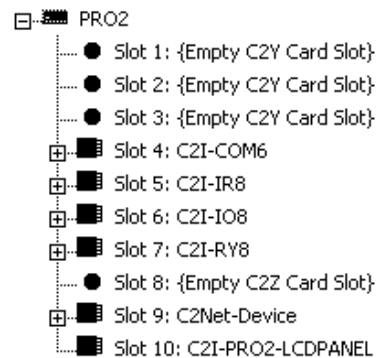
The PRO2 with its associated communication ports is displayed in the *System Views* upper pane.

#### **PRO2 System View**



The *System Views* lower pane displays the PRO2 system tree. This tree can be expanded to display and configure the various slots.

#### **Expanded PRO2 System Tree**



### **C2Z Card Slot in Configuration Manager**

The C2Z Card Slot can accept a C2ENET-2, which enables the PRO2 to address up to 252 Ethernet devices. Each Ethernet device is assigned a unique identifier called an IP ID, which is a hexadecimal value ranging from 03 to FE.

In Configuration Manager, drag a C2ENET-2 from the Plug-in Control Cards | Cards (2-Series Z Bus) folder of the *Device Library* and drop it on the PRO2 C2Z Card Slot in *System Views*. The *System Views* upper pane displays the Ethernet Units icon below the PRO2 graphic.

To view the list of supported devices, expand the control system in the bottom pane of *System Views* and double-click Slot 8: C2ENET-2. Supported devices include Ethernet control modules, PC and Web browser interfaces, and a variety of Crestron Ethernet touchpanels. To add a device to the system, expand the slot and double-click the desired IP ID, or right-click and select **Add Item** from the submenu. Then select the device you want to add.

In Program Manager, the C2ENET-2 symbol contains no signals; to program a controlled Ethernet device, expand the C2ENET-2 symbol in *Program View*. Then drag the symbol to *Detail View*. (Alternatively, you can double-click the symbol.



### About the IP Table

For the PRO2 (or any Ethernet-enabled control system) to control devices via Ethernet, the IP ID (all Cresnet devices are assigned IP IDs) of the device must be associated with an IP address, and both the IP ID and IP address must be entered into the IP Table of the control system.

You can create an IP Table in two ways. The first method is to double-click the device in Configuration Manager to open the “Device Settings” window. Click the *IP Net Address* tab and enter the IP address of the device in the *IP Address* field. Repeat this procedure for all Ethernet devices in your system. This creates what is referred to as a “default” IP Table. When the program is compiled and ready to be uploaded to the control system, you will have the option to upload this default IP Table.

The second method is to use the Crestron Viewport. This method is especially useful on site if you want to change one or more IP addresses without changing the program.

Alternatively, as with all 2-Series control systems, the PRO2 also has the capability to function as a peripheral device, or “slave”, in a master/slave arrangement with another control system. Here the IP Table of the PRO2 must contain just one entry for the master control system.

Refer to the “Creating an IP Table” section of Doc. 6052, e-Control, for more information.

### Example Program

An example program for the C2ENET-1/2 is available from the Crestron FTP site ([ftp.crestron.com](http://ftp.crestron.com)). Select the Examples folder and search for C2ENET.SMW.

### Uploading a Program

Refer to a 2-Series control system document for uploading information.

## TCP/IP Client and TCP/IP Server Symbols

In typical TCP/IP Terminology, a client connects to a server. In this case, the server symbol can handle only one connection to it. Since the sockets are generic TCP/IP, the client can connect to any server (Crestron's TCP/IP Server symbol or any non-Crestron server) and the server can accept a connection from any client (Crestron's TCP/IP Client symbol or any non-Crestron client).

The server symbol “listens” for a connection on a particular socket, and a client symbol is capable of connecting or disconnecting a socket. A socket is comprised of an IP Address and a Port Number. The IP Address is specified in the IP Table on the IP ID where the symbol resides and the Port number is specified in the symbol. For example, if the server symbol is dropped on IP ID 15, and the IP Table entry for IP ID 15 is 192.168.1.1, the server will listen for a connection from a 192.168.1.1 on the port number specified in the symbol.

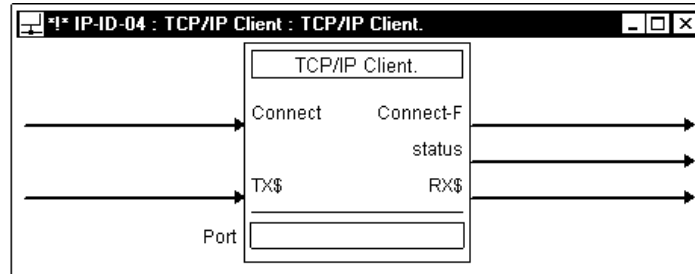
---

**NOTE:** An IP Address entry of **0.0.0.0** allows connection from any IP address. If the IP table contains valid IP addresses, connection will be allowed only from the specified addresses.

---

The following diagrams show the TCP/IP Client and the TCP/IP Server symbols in SIMPL Windows.

*Detail View of the TCP/IP Client Symbol in SIMPL Windows' Programming Manager*



The TCP/IP Client symbol enables TCP/IP communication between the control system and a device that has a TCP/IP port. The symbol must be assigned the IP address of the device, while the port address of the device must be entered in the <Port> parameter of the symbol. Both the IP address and port should be found in the manufacturer's documentation.

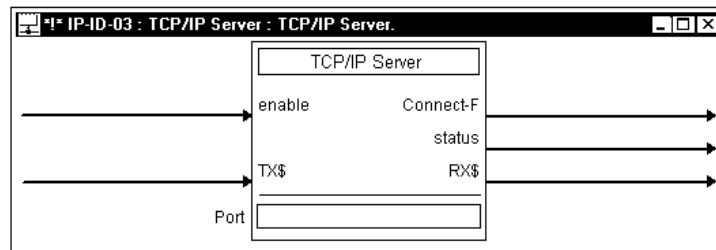
The symbol initiates the connection on the rising edge of <Connect>; when communication is established, <Connect-F> goes high. Serial data can then be transmitted and received via <TX\$> (transmit) and <RX\$> (receive) for as long as <Connect-F> remains high.

The <status> output is used for diagnostics and reports the connection status. The valid values are shown in the following table:

Analog Value	Connection Status
0	Not connected
1	Waiting for connection
2	Connected
3	Connection failed
4	Connection broken remotely

The TCP/IP Client symbol differs from the TCP/IP Server symbol (refer to graphic below) in that the Server symbol can only listen for a connection from a device, whereas the Client symbol can initiate the connection.

*Detail View of the TCP/IP Server Symbol in SIMPL Windows' Programming Manager*



The TCP/IP Server symbol enables TCP/IP communication between any device with a TCP/IP port and the control system. It differs from the TCP/IP Client symbol in that the latter symbol can initiate a connection with a device, whereas the TCP/IP Server symbol can only listen for a connection.

The symbol must be assigned the IP address of the device, while the port address of the device must be entered in the <Port> parameter of the symbol. Both the IP address and port should be provided by the manufacturer's documentation.

When the device establishes communication with the symbol, the <**Connect-F**> output goes high. Serial data can then be transferred via <**TXS**> (transmit) and <**RXS**> (receive) for as long as <**Connect-F**> remains high.

The <**status**> output is used for diagnostics and reports the connection status. The valid values are shown in the following table:

Analog Value	Connection Status
0	Not connected
1	Waiting for connection
2	Connected
3	Connection failed
4	Connection broken remotely
5	Connection broken

The optional <**enable**> input has a default value of 1. If <**enable**> is defined and goes low, no connection can be established (and <**status**> will equal 0).

## Programming with VT Pro-e

Information on creating web pages using VT Pro-e is in the VT Pro-e help file under the section “Web Browser Projects.”

## Uploading Web pages

The AV2/PRO2 provides a built-in Web server for e-Control applications. The AV2/PRO2 allots 2.5 MB of memory for “user files” such as Web pages, mailbox, and the compiled SPZ file. Web pages are loaded in the AV2/PRO2 using Viewport. Refer to the “Uploading Web Pages” section of Doc. 6052, e-Control, for more information.

## Problem Solving

### Troubleshooting

The table below provides corrective action for possible trouble situations. If further assistance is required, please contact a Crestron customer service representative.

#### *C2ENET-1/-2 Troubleshooting*

<b>TROUBLE</b>	<b>POSSIBLE CAUSE(S)</b>	<b>CORRECTIVE ACTION</b>
Communications via the LAN port is not functioning.	C2ENET-1/-2 improperly installed.	Follow installation procedures in this guide.
	Improper Ethernet connection.	Verify proper connection at Ethernet port.
	Damaged connector pins.	Follow installation procedures in this guide and inspect connector pins.
	Incorrect firmware/software.	Update firmware/software versions as per those listed in the Leading Specifications section.
	Another device on LAN has same/conflicting IP address.	Disconnect NET/IP cable from control system. Ping IP address of control system. If a reply occurs, obtain new static IP address for control system.
Conflicting IP Address window opens after entering IP addresses in New IP address fields.	IP Subnet for LAN A and B match (C2ENET-2 only).	Change LAN B IP address so that WAN and LAN no longer conflict.
Objects on Web page do not draw correctly.	File transfer error.	Reload web page project.
Cannot communicate with control system through router.	Appropriate port not open through router.	Verify port 80 is open for web hosting. Verify port 41795 for Crestron diagnostics. Verify 41794 for CIP.
Control system runs slow or crashes on LAN.	Potential virus on web port 80.	Change port via Viewport using console commands.

## Further Inquiries

If after reviewing this Operations and Installation Guide, you cannot locate specific information or have questions, please take advantage of Crestron's award winning customer service team by calling:

- In the US and Canada, call Crestron's corporate headquarters at 1-888-CRESTRON [1-888-273-7876] or 1-201-767-3400.
- In Europe, call Crestron International at +32-15-50-99-50.
- In Asia, call Crestron Asia at +852-2341-2016.
- In Latin America, call Crestron Latin America at +5255-5093-2160.
- In Australia and New Zealand, call Creston Pacific at +613-9480-2999

## Firmware Upgrades

To take advantage of all the C2ENET's features, it is important that the unit contains the latest firmware available. Therefore, please check Crestron's website ([http://www.crestron.com/downloads/software\\_updates.asp](http://www.crestron.com/downloads/software_updates.asp)) for the latest version of firmware. Not every product has a firmware upgrade, but as Crestron improves functions, adds new features, and extends the capabilities of its products, firmware upgrades are posted. If you have questions regarding upgrades procedures, contact Crestron customer service.

## Future Updates

As Crestron improves functions, adds new features, and extends the capabilities of the C2ENET-1/-2, additional information may be made available as manual updates. These updates are solely electronic and serve as intermediary supplements prior to the release of a complete technical documentation revision.

Check the Crestron website ([www.crestron.com](http://www.crestron.com)) periodically for manual update availability and its subjective value. Updates are available from the Download | Product Manuals section and are identified as an "Addendum" in the Download column.

---

## Software License Agreement

This License Agreement (“Agreement”) is a legal contract between you (either an individual or a single business entity) and Crestron Electronics, Inc. (“Crestron”) for software referenced in this guide, which includes computer software and, as applicable, associated media, printed materials, and “online” or electronic documentation (the “Software”).

BY INSTALLING, COPYING, OR OTHERWISE USING THE SOFTWARE, YOU REPRESENT THAT YOU ARE AN AUTHORIZED DEALER OF CRESTRON PRODUCTS OR A CRESTRON AUTHORIZED INDEPENDENT PROGRAMMER AND YOU AGREE TO BE BOUND BY THE TERMS OF THIS AGREEMENT. IF YOU DO NOT AGREE TO THE TERMS OF THIS AGREEMENT, DO NOT INSTALL OR USE THE SOFTWARE.

IF YOU HAVE PAID A FEE FOR THIS LICENSE AND DO NOT ACCEPT THE TERMS OF THIS AGREEMENT, CRESTRON WILL REFUND THE FEE TO YOU PROVIDED YOU (1) CLICK THE DO NOT ACCEPT BUTTON, (2) DO NOT INSTALL THE SOFTWARE AND (3) RETURN ALL SOFTWARE, MEDIA AND OTHER DOCUMENTATION AND MATERIALS PROVIDED WITH THE SOFTWARE TO CRESTRON AT: CRESTRON ELECTRONICS, INC., 15 VOLVO DRIVE, ROCKLEIGH, NEW JERSEY 07647, WITHIN 30 DAYS OF PAYMENT.

### LICENSE TERMS

Crestron hereby grants You and You accept a nonexclusive, nontransferable license to use the Software (a) in machine readable object code together with the related explanatory written materials provided by Crestron (b) on a central processing unit (“CPU”) owned or leased or otherwise controlled exclusively by You, and (c) only as authorized in this Agreement and the related explanatory files and written materials provided by Crestron.

If this software requires payment for a license, you may make one backup copy of the Software, provided Your backup copy is not installed or used on any CPU. You may not transfer the rights of this Agreement to a backup copy unless the installed copy of the Software is destroyed or otherwise inoperable and You transfer all rights in the Software.

You may not transfer the license granted pursuant to this Agreement or assign this Agreement without the express written consent of Crestron.

If this software requires payment for a license, the total number of CPU’s on which all versions of the Software are installed may not exceed one per license fee (1) and no concurrent, server or network use of the Software (including any permitted back-up copies) is permitted, including but not limited to using the Software (a) either directly or through commands, data or instructions from or to another computer (b) for local, campus or wide area network, internet or web hosting services; or (c) pursuant to any rental, sharing or “service bureau” arrangement.

The Software is designed as a software development and customization tool. As such Crestron cannot and does not guarantee any results of use of the Software or that the Software will operate error free and You acknowledge that any development that You perform using the Software or Host Application is done entirely at Your own risk.

The Software is licensed and not sold. Crestron retains ownership of the Software and all copies of the Software and reserves all rights not expressly granted in writing.

### OTHER LIMITATIONS

You must be an Authorized Dealer of Crestron products or a Crestron Authorized Independent Programmer to install or use the Software. If Your status as a Crestron Authorized Dealer or Crestron Authorized Independent Programmer is terminated, Your license is also terminated.

You may not rent, lease, lend, sublicense, distribute or otherwise transfer or assign any interest in or to the Software.

You may not reverse engineer, decompile, or disassemble the Software.

You agree that the Software will not be shipped, transferred or exported into any country or used in any manner prohibited by the United States Export Administration Act or any other export laws, restrictions or regulations (“Export Laws”). By downloading or installing the Software You (a) are certifying that You are not a national of Cuba, Iran, Iraq, Libya, North Korea, Sudan, or Syria or any country to which the United States embargoes goods (b) are certifying that You are not otherwise prohibited from receiving the Software and (c) You agree to comply with the Export Laws.

If any part of this Agreement is found void and unenforceable, it will not affect the validity of the balance of the Agreement, which shall remain valid and enforceable according to its terms. This Agreement may only be modified by a writing signed by an authorized officer of Crestron. Updates may be licensed to You by Crestron with additional or different terms. This is the entire agreement between Crestron and You relating to the Software and it supersedes any prior representations, discussions, undertakings, communications or advertising relating to the Software. The failure of either party to enforce any right or take any action in the event of a breach hereunder shall constitute a waiver unless expressly acknowledged and set forth in writing by the party alleged to have provided such waiver.

If You are a business or organization, You agree that upon request from Crestron or its authorized agent, You will within thirty (30) days fully document and certify that use of any and all Software at the time of the request is in conformity with Your valid licenses from Crestron of its authorized agent.

Without prejudice to any other rights, Crestron may terminate this Agreement immediately upon notice if you fail to comply with the terms and conditions of this Agreement. In such event, you must destroy all copies of the Software and all of its component parts.

### PROPRIETARY RIGHTS

Copyright. All title and copyrights in and to the Software (including, without limitation, any images, photographs, animations, video, audio, music, text, and “applets” incorporated into the Software), the accompanying media and printed materials, and any copies of the Software are owned by Crestron or its suppliers. The Software is protected by copyright laws and international treaty provisions. Therefore, you must treat the Software like any other copyrighted material, subject to the provisions of this Agreement.

Submissions. Should you decide to transmit to Crestron’s website by any means or by any media any materials or other information (including, without limitation, ideas, concepts or techniques for new or improved services and products), whether as information, feedback, data, questions, comments, suggestions or the like, you agree such submissions are unrestricted and shall be deemed non-confidential and you automatically grant Crestron and its assigns a non-exclusive, royalty-free, worldwide, perpetual, irrevocable license, with the right to sublicense, to use, copy, transmit, distribute, create derivative works of, display and perform the same.

Trademarks. CRESTRON and the Swirl Logo are registered trademarks of Crestron Electronics, Inc. You shall not remove or conceal any trademark or proprietary notice of Crestron from the Software including any back-up copy.

### GOVERNING LAW

This Agreement shall be governed by the laws of the State of New Jersey, without regard to conflicts of laws principles. Any disputes between the parties to the Agreement shall be brought in the state courts in Bergen County, New Jersey or the federal courts located in the District of New Jersey. The United Nations Convention on Contracts for the International Sale of Goods, shall not apply to this Agreement.

### CRESTRON LIMITED WARRANTY

CRESTRON warrants that: (a) the Software will perform substantially in accordance with the published specifications for a period of ninety (90) days from the date of receipt, and (b) that any hardware accompanying the Software will be subject to its own limited warranty as stated in its accompanying written material. Crestron shall, at its option, repair or replace or refund the license fee for any Software found defective by Crestron if notified by you within the warranty period. The foregoing remedy shall be your exclusive remedy for any claim or loss arising from the Software.

CRESTRON shall not be liable to honor warranty terms if the product has been used in any application other than that for which it was intended, or if it as been subjected to misuse, accidental damage, modification, or improper installation procedures. Furthermore, this warranty does not cover any product that has had the serial number or license code altered, defaced, improperly obtained, or removed.

Notwithstanding any agreement to maintain or correct errors or defects Crestron, shall have no obligation to service or correct any error or defect that is not reproducible by Crestron or is deemed in Crestron’s reasonable discretion to have resulted from (1) accident; unusual stress; neglect; misuse; failure of electric power, operation of the Software with other media not meeting or not maintained in accordance with the manufacturer’s specifications; or causes other than ordinary use; (2) improper installation by anyone other than Crestron or its authorized agents of the Software that deviates from any operating procedures established by Crestron in the material and files provided to You by Crestron or its authorized agent; (3) use of the Software on unauthorized hardware; or (4) modification of, alteration of, or additions to the Software undertaken by persons other than Crestron or Crestron’s authorized agents.

ANY LIABILITY OF CRESTRON FOR A DEFECTIVE COPY OF THE SOFTWARE WILL BE LIMITED EXCLUSIVELY TO REPAIR OR REPLACEMENT OF YOUR COPY OF THE SOFTWARE WITH ANOTHER COPY OR REFUND OF THE INITIAL LICENSE FEE CRESTRON RECEIVED FROM YOU FOR THE DEFECTIVE COPY OF THE PRODUCT. THIS WARRANTY SHALL BE THE SOLE AND EXCLUSIVE REMEDY TO YOU. IN NO EVENT SHALL CRESTRON BE LIABLE FOR INCIDENTAL, CONSEQUENTIAL, SPECIAL OR PUNITIVE DAMAGES OF ANY KIND (PROPERTY OR ECONOMIC DAMAGES INCLUSIVE), EVEN IF A CRESTRON REPRESENTATIVE HAS BEEN ADVISED OF THE POSSIBILITY OF SUCH DAMAGES OR OF ANY CLAIM BY ANY THIRD PARTY. CRESTRON MAKES NO WARRANTIES, EXPRESS OR IMPLIED, AS TO TITLE OR INFRINGEMENT OF THIRD-PARTY RIGHTS, MERCHANTABILITY OR FITNESS FOR ANY PARTICULAR PURPOSE, OR ANY OTHER WARRANTIES, NOR AUTHORIZES ANY OTHER PARTY TO OFFER ANY WARRANTIES, INCLUDING WARRANTIES OF MERCHANTABILITY FOR THIS PRODUCT. THIS WARRANTY STATEMENT SUPERSEDES ALL PREVIOUS WARRANTIES.

---

## Return and Warranty Policies

### Merchandise Returns / Repair Service

1. No merchandise may be returned for credit, exchange, or service without prior authorization from CRESTRON. To obtain warranty service for CRESTRON products, contact the factory and request an RMA (Return Merchandise Authorization) number. Enclose a note specifying the nature of the problem, name and phone number of contact person, RMA number, and return address.
2. Products may be returned for credit, exchange, or service with a CRESTRON Return Merchandise Authorization (RMA) number. Authorized returns must be shipped freight prepaid to CRESTRON, Cresskill, N.J., or its authorized subsidiaries, with RMA number clearly marked on the outside of all cartons. Shipments arriving freight collect or without an RMA number shall be subject to refusal. CRESTRON reserves the right in its sole and absolute discretion to charge a 15% restocking fee, plus shipping costs, on any products returned with an RMA.
3. Return freight charges following repair of items under warranty shall be paid by CRESTRON, shipping by standard ground carrier. In the event repairs are found to be non-warranty, return freight costs shall be paid by the purchaser.

### CRESTRON Limited Warranty

CRESTRON ELECTRONICS, Inc. warrants its products to be free from manufacturing defects in materials and workmanship under normal use for a period of three (3) years from the date of purchase from CRESTRON, with the following exceptions: disk drives and any other moving or rotating mechanical parts, pan/tilt heads and power supplies are covered for a period of one (1) year; touchscreen display and overlay components are covered for 90 days; batteries and incandescent lamps are not covered.

This warranty extends to products purchased directly from CRESTRON or an authorized CRESTRON dealer. Purchasers should inquire of the dealer regarding the nature and extent of the dealer's warranty, if any.

CRESTRON shall not be liable to honor the terms of this warranty if the product has been used in any application other than that for which it was intended, or if it has been subjected to misuse, accidental damage, modification, or improper installation procedures. Furthermore, this warranty does not cover any product that has had the serial number altered, defaced, or removed.

This warranty shall be the sole and exclusive remedy to the original purchaser. In no event shall CRESTRON be liable for incidental or consequential damages of any kind (property or economic damages inclusive) arising from the sale or use of this equipment. CRESTRON is not liable for any claim made by a third party or made by the purchaser for a third party.

CRESTRON shall, at its option, repair or replace any product found defective, without charge for parts or labor. Repaired or replaced equipment and parts supplied under this warranty shall be covered only by the unexpired portion of the warranty.

Except as expressly set forth in this warranty, CRESTRON makes no other warranties, expressed or implied, nor authorizes any other party to offer any other party to offer any warranty, including any implied warranties of merchantability or fitness for a particular purpose. Any implied warranties that may be imposed by law are limited to the terms of this limited warranty. This warranty statement supercedes all previous warranties.

#### Trademark Information

*All brand names, product names, and trademarks are the sole property of their respective owners. Windows is a registered trademark of Microsoft Corporation. Windows95/98/Me/XP and WindowsNT/2000 are trademarks of Microsoft Corporation.*



# Glossary of Terms

## 2-SERIES CONTROL SYSTEM

A 2-Series control system is any Crestron control processor in the 2-Series product line. Currently, these include the AV2, CP2, CP2E, PAC2, PRO2, and RACK2.

## CRESNET ID

Cresnet ID, a unique identity code ranging from 03 to FE (in hexadecimal), is given to all devices that communicate using the Cresnet network protocol.

## DEFAULT ROUTER

A default router is a router that sends packets within the local network to destinations outside of the local network, or receives them from outside and propagates them onto the local network. It is also referred to as a Gateway.

## ETHERNET HUB

Inexpensive four to 16 port devices that provide a way to physically tap into an existing Ethernet connection and expand the plugs available, but do not perform any packet routing.

## GATEWAY

See Default Router above.

## IP ADDRESS

Internet protocol address is a unique number that is used to represent every single computer in a network. All the computers on the Internet have a unique IP address. The format of the IP address is four numbers separated by dots (e.g., 198.123.456.7).

## IP ID

The IP ID is a two-digit hexadecimal number that is used to differentiate a given device from a group of Ethernet devices in a control system with the same IP address. Just as the Net ID is used to distinguish between identical devices within a SIMPL Windows program, the IP address for a specific IP ID in the control system's IP table must be set to the IP address of the given device. Furthermore, the IP ID in the given device's static master table must be set to the IP address of the control system.

## IP TABLE

An IP table lists IP IDs and their corresponding IP addresses. This table is maintained inside each control system, though it may be generated by a SIMPL Windows program, or edited manually using the Viewport utility.

## NETWORK ADDRESS

A network address is a pattern of bits in IP address format that is shared by all network devices on a given local network. For example, network address 192.168.2.0 describes the local network where all devices have an IP address of 192.168.2.x, where x is any value from 1 to 254.

## ROUTER

Router is a communications device which routes data between networks.

## SUBNET MASK

A mask simply conceals something. With respect to an IP address, a mask is simply a screen of numbers that reveals a set of numbers on which to focus. For example, consider the IP address 150.215.017.009. Assuming this is part of a Class B network, the first two numbers (150.215) represent the Class B network address, and the second two numbers (017.009) identify a particular host on this network. Therefore, the subnet mask is the network address plus the bits reserved for identifying the subnetwork. (By convention, the bits for the network address are all set to 1, though it would also work if the bits were set exactly as in the network address.) In this case, therefore, the subnet mask would be 11111111.11111111.11110000.00000000. It's called a mask because it can be used to identify the subnet to which an IP address belongs by performing a bitwise AND operation on the mask and the IP address. The result is the subnetwork address:

Subnet Mask	255.255.240.000	11111111.11111111.11110000.00000000
IP Address	150.215.017.009	10010110.11010111.00010001.00001001
Subnet Address	150.215.016.000	10010110.11010111.00010000.00000000

The subnet address, therefore, is 150.215.016.000.

## TCP/IP

TCP/IP is the acronym for Transmission Control Protocol/Internet Protocol. It is a standard set of protocols that govern the basic workings of the Internet that was implemented in 1982.

The TCP part is all about ensuring that data is transmitted correctly between two computers. If any errors occur these are detected and the data is retransmitted. The data transmitted is split up into small portions referred to as data packets. The IP part of TCP/IP is how these data packets are moved from one point to another. Each computer on the Internet has a unique IP address and the data packets are moved from the source to the destination through many different computers that are controlled via TCP/IP. This protocol is used on the Internet and also by computers that are part of a LAN.

This page intentionally left blank.



**Crestron Electronics, Inc.**  
15 Volvo Drive Rockleigh, NJ 07647  
Tel: 888.CRESTRON  
Fax: 201.767.7576  
[www.crestron.com](http://www.crestron.com)

**Operations & Installation Guide – DOC. 5962A**  
**06.02**

Specifications subject to  
change without notice.